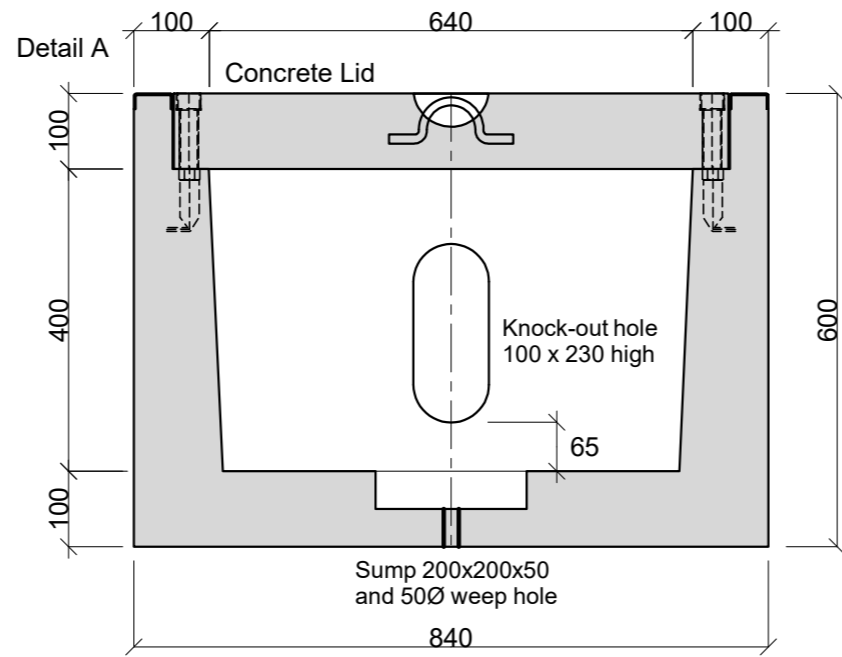
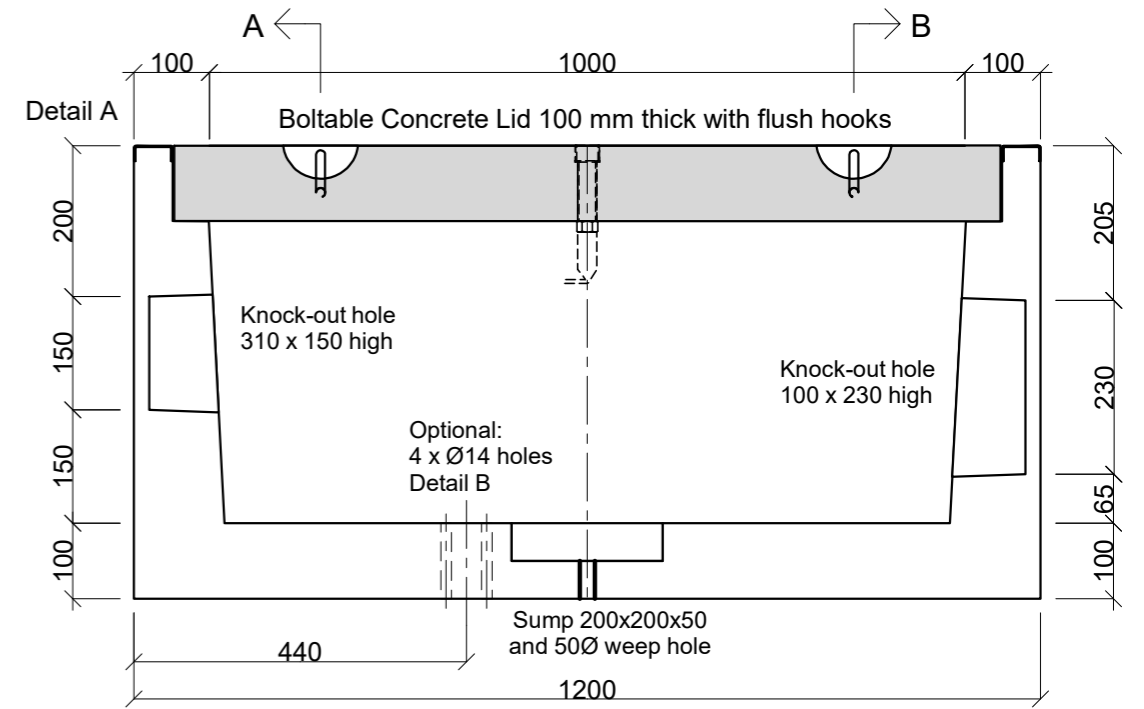


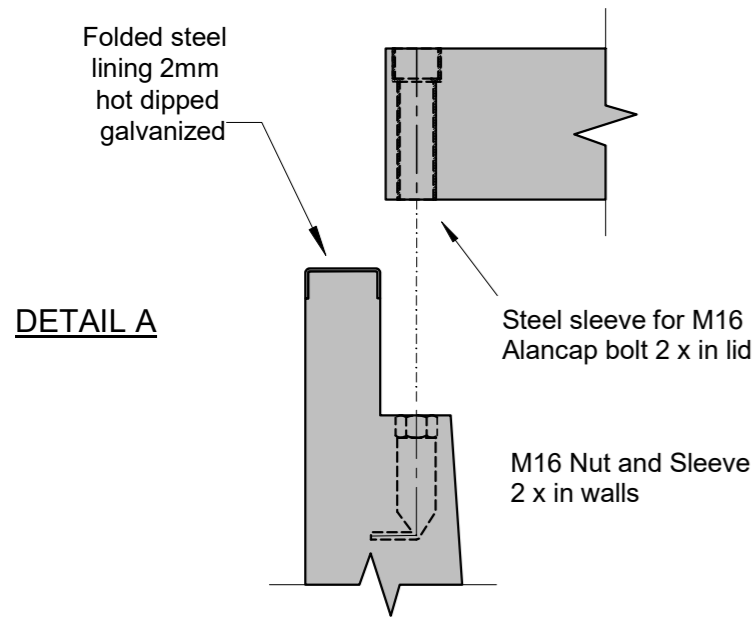
SECTION A



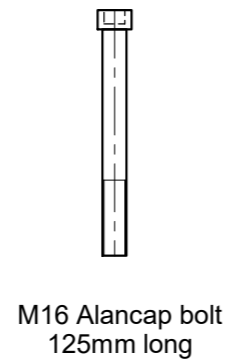
SECTION B



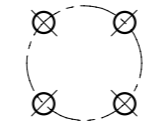
LONG SECTION



DETAIL A



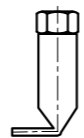
M16 Alancap bolt 125mm long



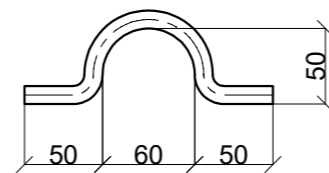
DETAIL B (Optional)
4 holes Ø14
45° PCD Ø76
for Insulator



Steel sleeve for M16 Alancap bolt zinc plated

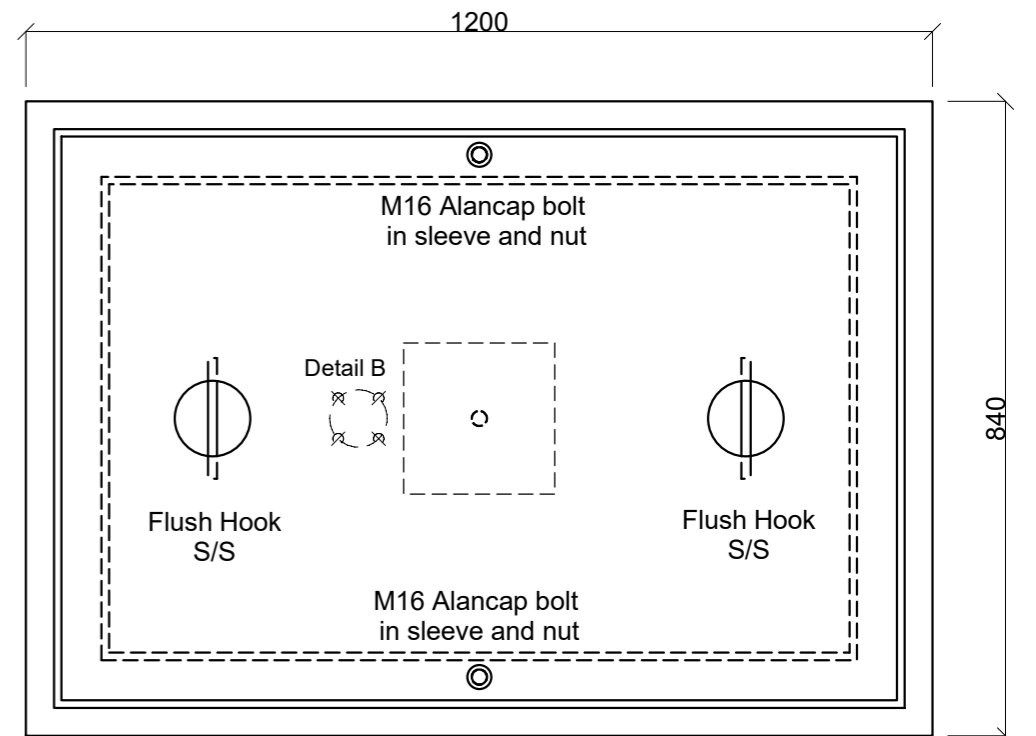


M16 Nut and Sleeve zinc plated

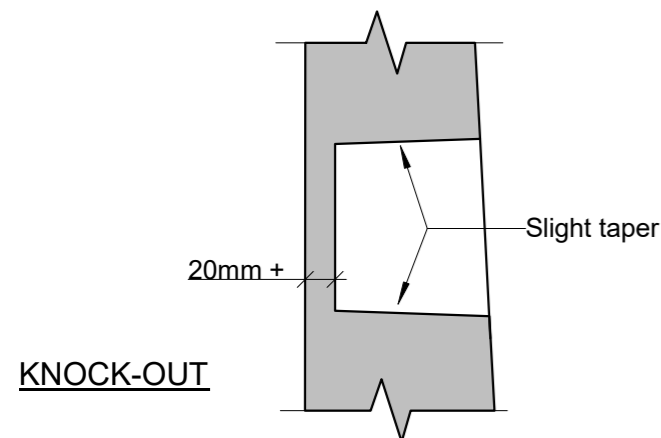


12mm Stainless Steel Bar

FLUSH HOOK



PLAN ON CONCRETE LID



KNOCK-OUT

BOLT DOWNS

EQUIPMENT

SUITABLE FOR LOW FREQUENCY WHEEL LOADS UP TO 100kN

MANHOLE: DC NEGATIVE RETURN FOR TRANSNET

Size: 1200 x 840 x 600mm deep external dimensions
Material: Precast concrete, reinforced
Loading: 100kN wheel load

Design: SANS 0100-1 1994:
Structural use of Concrete
Engineer: P. van Heerden Pr. Eng.

Date: 14 September 2007



Vanstone

Vanstone Precast (Pty) Ltd
Tel (012) 541 2056
pvheerden@vanstone.co.za